

## Product Overview

## Hall A

**ANANDA**

**ANANDA DRIVE TECHNIQUES (JIANGSU) CO LTD**

**A-E28**



ANANDA's product line comprises three core motor series: direct drive hub motors, geared hub motors and mid-drive motors, with matching controllers, sensors and instruments. These products are widely used in eMopeds, eMotorcycles and other electric two-wheelers.

**坛成**

**CHANGZHOU JINTAN DISTRICT DEZHONG ASSISTED WHEELCHAIR TECHNOLOGY CO LTD**

**A-D39**



DEZHONG is a professional enterprise engaged in wheelchairs, leisure three-wheelers R & D, manufacturing and marketing integrated enterprise. The German series of electric wheelchairs and leisure tricycles are favored by consumers.

**DEGANG**

**CHONGQING DEGANG SCIENCE & TECHNOLOGY CO LTD**

**A-A51**



DEGANG focuses on two major fields: motorcycle cooling system and aluminum alloy forging and has four production bases for producing motorcycle radiators, oil coolers, all kinds of aluminum heat exchangers, aluminum alloy forging parts, aluminum alloy frames, etc.

**EVE Energy**

**EVE ENERGY CO LTD**

**A-D50**



As the top cylindrical battery supplier in China in terms of 2024 shipments, EVE offers comprehensive solutions for micro-mobility including cylindrical/prismatic cells, battery modules, and system solutions for electric two/three-wheelers, low-speed vehicles, and battery-swapping applications.

## Product Overview

## Hall A

**HUAIHAI**

**HUAIHAI GLOBAL E-COMMERCE CO LTD**

**A-A69**



HUAIHAI is committed to innovating full-scenario mobility solutions, with its products and services available in over 120 countries and regions. It has maintained the industry's top export ranking for years, boasting an annual production and sales capacity of 3 million vehicles.

**平安人家**

**JIANGSU ANDITAI VEHICLE MANUFACTURING CO LTD**

**A-B69**



ANDITAI specializes in electric tricycles. Three major product series: electric leisure tricycles, passenger tricycles and cargo tricycles are further categorized into economy, standard, deluxe and heavy - duty types to meet diverse consumer demands.

**昊丰车辆**

**JIANGSU DUSHENG LOCOMOTIVE CO LTD**

**A-A63**



DUSHENG uses advanced OTC welding robots in the industry for welding; the painting workshop has acid pickling, phosphating, electrophoresis and a baking paint line; the final assembly workshop has two advanced assembly production lines.

**江苏珠峰**

**JIANGSU EVEREST ELECTROMECHANICAL TECHNOLOGY CO LTD**

**A-A67**



EVEREST has five series of products in multiple varieties, including freight, leisure, full canopy, four wheel electric carriages and special vehicles. It possesses the currently advanced intelligent assembly line manufacturing process in the industry.

## Product Overview

## Hall A



**JIANGSU FOREVER MOTORCYCLE TECHNOLOGY CO LTD**

**A-F43**



Founded in 1940, FOREVER, one of the earliest complete bicycle manufacturers in China, has a product portfolio centered around bicycles, electric bicycles, electric tricycles, and children's bicycles, with an annual production capacity of up to 3 million units.



**JIANGSU HANBANG VEHICLE INDUSTRY CO LTD**

**A-B68**



HANBANG is deeply involved in the field of new energy travel, with electric tricycles as its core products, and simultaneously expanding electric special vehicles, smart lithium battery models and personalized travel solutions.



**JIANGSU JINPENG GROUP CO LTD**

**A-A68**



JINPENG's new energy electric tricycle solves the problem of short distance refrigerated transportation and the passenger tricycle uses battery swapping technology with a single charge range of up to 150km.



**JIANGSU JUNCHAO ELECTRIC VEHICLE PARTS MANUFACTURING CO LTD**

**A-B61**



JUNCHAO specializes in the production, sales, and service of new energy steel wheels and electric three-wheel steel wheels. It has top-notch equipment, cathodic electrophoretic coating assembly lines, fluid electrostatic spray painting lines and high-precision testing equipment.

## Product Overview

## Hall A



**JIANGSU RISINGSUN TECHNOLOGY CO LTD**

**A-A62**



RISINGSUN's inflation-free tire made of high-performance elastic materials with professional technology features an integral tire and cavity structure. The tire is anti-aging, with a 35,000km abrasion journey and a lifespan 3 to 5 times that of ordinary tires.



**JIANGSU SINSKI VEHICLE SCIENCE & TECHNOLOGY CO LTD**

**A-E18**



SINSKI possesses high-class equipment for processing and production, as well as advanced production lines for fuel motorcycles and electric scooters. It also has an annual throughput of 200,000 electric scooters and fuel motorcycles.



**JIANGSU SULIDA GROUP**

**A-D68**



JIANGSU SULIDA GROUP mainly producing electric three/ four-wheeled passenger carriers, logistics and express vehicles; four-wheeled bucket/fire truck, cleaning truck, tourist/patrol car; precision motor gear and more than 120 kinds of product categories, special products can be customized R&D design.



**JIANGSU XINRI ELECTRIC VEHICLE CO LTD**

**A-A18**



As a leader in the development and production of electric vehicles, SUNRA combines vehicle power, intelligent technology and sophisticated control systems to provide users with a comfortable, safe and powerful driving experience.

## Product Overview

## Hall A



JIANGSU ZHONGXING MOTORCYCLE CO LTD

A-B42



ZXTec is dedicated to R&D, manufacturing and marketing of electric bicycles and motorbikes. Besides, it also provides services for ordering custom products (OEM), and customers can use specifications and logos as they wish according to their respective target markets.



JULONG IMPORT & EXPORT (WUXI) CO LTD

A-E12



JULONG with 3 updated production lines, can produce around 300,000 sets of electric scooters per year. Since 2019, it has become the top functional electric scooter manufacturer in China, especially in the heavy loading series.



LUSUNNY (JIANGSU) VEHICLES CO LTD

A-B18



LVJIA focuses on the research, development, production and sales of electric vehicles which have long range and comfortable driving experience and won the international TS16949 quality management system certification.



MADE-IN-CHINA.COM

A-E36



Established in 1998, MADE-IN-CHINA.COM online directory features over 92 million product listings from reliable, highly specialized, and qualified Chinese suppliers, spanning 27 industries and reaching buyers in 220+ countries and regions.

## Product Overview

## Hall A



PEIXIAN WEIDA ELECTRIC VEHICLE  
MANUFACTURING FACTORY

A-A66



WEIDA has an annual output capacity of 200,000 electric tricycles. It mainly produces new energy electric tricycles which are suitable for Volkswagen traffic riding, carrying goods, leisure and entertainment.



SHANDONG DONGYUE TECHNOLOGY  
DEVELOPMENT CO LTD

A-D59



DONGYUE is an enterprise that integrates tire manufacturing and sales. The company's products sell well throughout the country with perfect and excellent quality, and are exported to multiple countries and regions such as Europe, America, Africa, and Southeast Asia.



SHENZHEN YIXI TECHNOLOGY CO LTD

A-A15



YIXI focuses on the research and development, design, production, and marketing of high-quality motorbike helmet headphones. Their commitment to 'quality first, innovation as the core, technology-based' drives them to provide effective solutions for safe communication while cycling.



SPAYLATER

A-A21



SPayLater is a buy now pay later payment method that you can find in the shopeepay app and shopee, with easy and fast activation process. By using SPayLater, you can make transactions with flexible installment payments.

## Product Overview

## Hall A



乾新机车  
QIANXIN LOCOMOTIVE

TAIZHOU QIANXIN VEHICLE CO LTD

A-A17



The main business of QIANXIN involves the field of electric vehicles, including various types of motorcycles, electric scooters, electric motorcycles, engines, locomotive spare parts, etc.



TAIZHOU WANGYE MOTORCYCLE CO LTD

A-A31



WANGYE SCOOPY is a vintage-styled, electric-efficient urban commuter. It features a rounded «S-curve» body design with charming LED oval headlights, circular taillights, and keyless ignition. It is equipped with front disc/rear drum brakes, a 2000W rated power, and a top speed of 60 km/h.



TIANNENG BATTERY GROUP CO LTD

A-A50



TIANNENG is a Global Leading New Energy Company committed to providing environmentally-friendly battery solutions for various industries worldwide since 1986. Tianneng set up 7 R&D centers to constantly develop technology and keep innovation in the area of lead acid batteries, lithium batteries, hydrogen Fuel Cells, and Sodium-ion batteries.



TUAN NGHIA PRODUCTION ASSEMBLE  
COMPANY LIMITED

A-A03



BEFORE ALL, a product of TUAN NGHIA GROUP, which specializes in providing electric vehicles that meet the needs for smart and sustainable mobility. BEFORE ALL is proud to offer customers a variety of high-quality electric vehicle models with sophisticated designs and advanced technology.

## Product Overview

## Hall A



WUXI EAST TECHNOLOGY CO LTD

A-E40



WUXI EAST has main products including electric scooters, racing motorcycles, gasoline scooters, electric racing motorcycles and various spare parts, with several hundreds of models available, and is dedicated to strict quality control and thoughtful customer service.



WUXI JINMING TECHNOLOGY CO LTD

A-E02



HOKEN has 26 years of professional motorcycle and electric vehicle manufacturing experience. Its products cover three major categories of high-speed electric motorcycles, light two-wheelers, and practical three-wheelers.



WUXI LADEA EV CO LTD

A-F35



Starting from the initial motorcycle accessories and electric vehicle accessories, LADEA has gradually expanded to the research and development, production and marketing of motorcycles, electric vehicles and one-stop solutions for smart charging and swapping.



WUXI LEGEND INTERNATIONAL IMPORT &  
EXPORT CO LTD

A-F39



LEGEND capitalizes on mature supporting infrastructure and R&D capabilities, and focuses primarily on the production and development of two-wheeled electric vehicles, three-wheeled electric vehicles and electric motors.

## Product Overview

## Hall A



WUXI MIFUN INTERNATIONAL TRADE CO LTD **A-E44**



MIFUN, an enterprise mainly engaged in the export of electric two-wheeled vehicles, pays attention to product quality and brand benefits and has a wide range of electric vehicle products.



WUXI TENGHUI ELECTRIC VEHICLES CO LTD **A-D28**



WUXI TENGHUI is a modern technology enterprise specializing in the research, development, manufacturing and sales of electric vehicles. The brand Engtian electric bicycle is equipped with high-performance lithium batteries, with a range of 60 to 120km.



XINGTAI OUYATE BICYCLE CO LTD **A-C61**



OUYATE specializes in the production of bicycles, mountain bikes, road vehicles, performance vehicles, balance vehicles and children's toys. Its products are excellent, with novel styles, safe and reliable quality.



XUZHOU KEHUAN MECHANICAL AND ELECTRICAL EQUIPMENT CO LTD **A-B65**



KEHUAN integrates research & development, production, sales and service. Main products include electric vehicle controllers, motors and other ancillary products, providing perfect solutions for electric vehicle control systems to customers.

## Product Overview

## Hall A



XUZHOU KEYA ELECTROMECHANICAL CO LTD **A-B63**



KEYA is a national high-tech enterprise, mainly engaged in the production, research & development and sales of BLDC motor, controller, rear axle and gearbox, providing customers with a one-stop solution for electronic control drive systems.



XUZHOU OUJIA TRADING CO LTD **A-B67**



OUJIA's business scope includes the production and sales of motorcycles, mopeds, off-highway recreational vehicles and their parts.



XUZHOU OUWANG ELECTRIC VEHICLE INDUSTRY CO LTD **A-C36**



The products of R&D and manufacturing of OUWANG include four major categories: cargo series, leisure vehicles, special vehicle export series, and unmanned driving sanitation series. The annual production capacity of new energy motorcycles is more than 500,000 vehicles.



XUZHOU XINHAOZE LOCOMOTIVE CO LTD **A-D35**



XINHAOZE has four major production processes: stamping, welding, painting and final assembly. By using advanced technology and equipment, it ensures the overall precision, firmness and durability of cost-effective electric tricycles.



**ZHUZHOU YUANXIANG LOCOMOTIVE TECHNOLOGY CO LTD**

**A-C39**



YUANXIANG produces electric tricycles, recreational vehicles, passenger vehicles, sanitation vehicles, sweepers and various electric vehicle accessories, with the degree of product automation being as high as 70%.



**ZHEJIANG DATAI NEW ENERGY CO LTD**

**A-B36**



DATAI is an electromechanical manufacturer that is specialized in manufacturing and R&D of high-power DC permanent magnet motors, six-phase permanent magnet synchronous motors, (modular) controllers and variable-speed rear axles. The products are widely applied in electric tricycles, electric buses, electric sanitation trucks, low-speed four-wheel electric vehicles and electric forklifts etc.



**ZHEJIANG JERRY ELECTRONICS CO LTD**

**A-B56**



JERRY is specialized in manufacturing power supply and electric vehicle charger. Its products are exported to 63 countries around the world along with the electric cars, electric sprayers and EPS products.



**ZHEJIANG TIANYING LOCOMOTIVE CO LTD**

**A-A47**



TEYIN is a first-class motorcycle manufacturer in the "Announcement" of the Ministry of Industry and Information Technology of China. It has a well-equipped engine assembly line, a frame welding production line, a complete vehicle assembly line and a complete vehicle plastic painting production line.



**ZHEJIANG XINHAO REHABILITATION EQUIPMENT CO LTD**

**A-A55**

XINHAO is specialized in producing seats of elderly scooters, medical wheelchairs, electric cars and ATVs. Every year, the company produces 200,000 scooter seats, 500,000 electric ATV seats, 100,000 medical wheelchair seats and 50 E-car seats.

## Product Overview

## Hall B



安徽甬安雨具有限公司  
ANHUI YONGAN RAINCOAT CO. LTD.

ANHUI YONGAN RAIN GEAR CO LTD

B2-B25



YONGAN focuses on making rainwear products including motorcycle rainwear, electric vehicle ponchos, outdoor wear, rainwear suits, disposable rainwear, waterproof bags, covers and other waterproof products.



DEGSON TECHNOLOGY CO LTD

B2-D07



Micro-mobility products mainly involve the transmission of power and signals for the main functional components of electric motorcycles, e - bikes, scooters, and other vehicle models. The company offers customized services, excellent and stable quality, competitive prices and flexible delivery.



DONGSUAN RICHTEK AMPEREX  
TECHNOLOGY CO LTD

B2-E13



RATL specializes in advanced electric drive powertrains for small intelligent vehicles. Leveraging cutting-edge hairpin motor technology, RATL deliver superior solutions, achieving higher automation efficiency, enhanced product consistency, 20%+ slot fill factor and 30%+ power density improvement.



EV CHARGING CLEAN ENERGY  
TECHNOLOGY CO LTD

B2-E11



Atlas AC Series offers an ultimate experience with compatibility for every EV, easy installation and maintenance, plug - and - charge convenience, and continuous, interruption - free operation. It features high - value quality with a robust, weatherproof design (up to IP65, suitable for -40 - 60 ), a 15 - year design life, a 3 - year warranty extendable to 5 years, and multiple connectivity options.

## Product Overview

## Hall B



FUJIAN LEISHENG ENERGY TECHNOLOGY  
CO LTD

B2-D19



LEISHENG offers low- and high-voltage switchgear and distribution boxes with ABB, Chint, and Schneider components, ensuring stable performance in industrial, commercial, and utility applications. The power of ev chargers can be up to 960 kW.



HK GACIRON TECH CO LIMITED

B2-A27



GACIRON, a professional bicycle light brand, integrates design, research & development, and manufacturing, offering a one - stop solution for cycling lighting to both domestic and international customers.



HUIMAO TONG (XUZHOU) IMPORT AND  
EXPORT CO LTD

B2-A19



ECU (4G+Bluetooth) is a newly developed active positioning terminal by HUIMAO TONG that integrates communication and positioning, suitable for electric vehicles, motorcycles, cars and other models. It has functions such as positioning, two-way vehicle data transmission and track playback, etc.



IS TECHNOLOGY (ANHUI) CO LTD

B2-D21



IS TECHNOLOGY is a new high-tech enterprise specializing in providing military-civilian conversion products of rare earth applications. The company's products include heat-insulating rare earth coatings, RE films, metallic thermal barrier coatings, and other new high-tech materials for rare earth applications.

## Product Overview

## Hall B

# GTAKE

JIANGSU GTAKE ELECTRIC CO LTD

B2-B13



GTAKE concentrates on the R&D, production and sales of new-energy and electric transmission products, including EV motor controller, E-motorcycle motor controller, power supply for EV powertrain tests, power supply for storage battery tests, PCS, etc.

# TRAMA

PRO COMPONENTS

JIANGSU TRAMA INDUSTRIAL TECHNOLOGY CO LTD

B2-D11



TRAMA's main products are aluminum and aluminum-magnesium alloy suspension forks with multiple options of spring, oil and air structure, which are mainly for mountain bikes, E-bikes, CT-bikes and scooters, and customization is also provided.



JIEAOWUJIN (SUZHOU) OUTDOOR TECHNOLOGY CO LTD

B2-A08



JIEAOWUJIN specializes in high-end cycling apparel OEM services, offering unique designs, innovative fabrics and expert craftsmanship, combining fashion with functionality, using high-performance eco-friendly materials to create comfortable and durable cycling wear.

# XVE

JIN XIN YU POWER (SHENZHEN) CO LTD

B2-B23



JIN XIN YU manufactures battery chargers and power adapters from 1W to 1500W. The company has international certificates including CCC, CE, FCC, ROHS, SAA, PSE, KC, BSMI, CB, ETL, UL, PSB, LVD, etc.

## Product Overview

## Hall B

# Karasawa

唐泽集团

KARASAWA TRAFFIC EQUIPMENT (TAIZHO) CO LTD

B2-B08



KARASAWA is the inventor of the bicycle band brake and specializes in developing and manufacturing all kinds of brakes, reducers, chargers, rear axle components, sports equipment, nursing aids, rehabilitation equipment, medical equipment and metal surface treatment.

# K-Lite

K-LITE (SHANGHAI) INDUSTRIAL CO LTD

B2-A15



K-LITE reflex reflectors are one of the important safety devices for vehicles, mainly used to improve the visibility of vehicles at night or in low light conditions. It can be designed in specific colors and shapes with higher and brighter reflection to reduce the occurrence of traffic accidents.

# MACNICA

MACNICA CYTECH PTE LTD

B2-B07

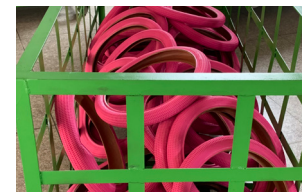


MACNICA presents quick turn-around adoptable solutions for your 2 & 3 Wheelers Light Electric Vehicle (LEV). We offer solutions for BMS for 48-72V system, Drive Controller for 3KW motor, KW SiC based Charger solution for 48V/72V system, Cluster Display for 2/3 Wheelers. Each of our solutions use the best in class products such as Analog Devices (ADI), Infineon, onsemi and Renesas.

# BIN RUI

NANTONG IFENG RUBBER PRODUCT CO LTD

B2-A26



IFENG's main products include inner tubes for bicycles, electric bicycles, motorcycles, trucks, agricultural vehicles and construction vehicles, as well as outer tires for bicycles, electric bicycles and motorcycles.



## Product Overview

## Hall B



**NANTONG SUKANG TRADING CO LTD**

**B2-B12**



HAIBAO BATTERY has launched various battery products, including lead-acid, lithium, motorcycle and energy storage batteries. Its main product is lead-acid batteries, mainly used in electric mopeds, three/four wheelers and electric road vehicles.



**NINGBO ZHIDE BICYCLE INDUSTRY CO LTD**

**B2-A09**



NINGBO ZHIDE is a professional manufacturer of alloy/steel/resin bicycle brake system and shifting system. Various bicycle parts such as derailleurs gear sets, brake sets, freewheel, disc brake, hydraulic disc brake and etc.



**PHYLION BATTERY CO LTD**

**B2-A02**



PHYLION leads the industry in healthy and rapid development. The global sales of lithium batteries for light vehicles exceeds 30 million sets, and the supporting electric vehicle batteries exceed 200,000 sets.



**SHENZHEN HONGJIALI NEW ENERGY CO LTD**

**B2-C20**



HONGJIALI is committed to providing customers with comprehensive solutions for new energy electric vehicle charging and swapping, optical storage and charging integration, energy conversion, professional charging equipment, and charging operation station construction.

## Product Overview

## Hall B



**SHENZHEN INFYPOWER CO LTD**

**B2-C12**

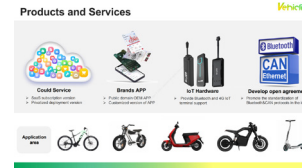


IDS120K3 DC Fast Charger is all in one design and fully compatible with CCS2/CHAdeMO/GBT EVcharging standard. It features small size, light weight and easy to install and move, user friendly interface, IP55 protection, robust and durable design for various outdoor applications.



**SUZHOU VEHICLINK TECHNOLOGY CO LTD**

**B2-D13**



VEHICLINK provides comprehensive AI, software, and connectivity solutions for brand operators in the E-Mobility industry. The company offers IoT connectivity hardware tailored to specific vehicle models and integrates with the iReadyGo white-label application and a feature-rich SaaS backend.



**TAICANG XIANGYUE SPORTS EQUIPMENT CO LTD**

**B2-B19**



The company focuses on the design, development, manufacturing and sales of mid-to-high-end sports bicycles and electric bicycle hubs and is committed to creating products with stable quality, reliable performance, novel appearance, and high cost-effectiveness.



**TECH INTERNATIONAL (SHANGHAI) CO LTD**

**B2-D12**



TECH is the world's leading producer of tire and tube repairs and wheel service solutions. The brand QuikFix under TECH provides sealant and repair materials for two-wheeled vehicles. QuikFix tire sealant with quality rubber granules and nanometer materials has good suspension properties.

## Product Overview

## Hall B



**TWS TECHNOLOGY (GUANGZHOU) LIMITED**

**B2-A05**



TWS provide energy solutions for vehicles such as Ebike, E-Motorcycles, E3V and more, ensuring efficient energy use and extended battery life for better performance.



**WUXI ZHIYANG NEW ENERGY TECHNOLOGY CO LTD**

**B2-D28**



ZHIYANG specializes in supplying parts for two/three wheel vehicles, including but not limited to chargers, controllers, tires, plastic parts, motors, brake pads, rearview mirrors, self-sealing liquid, rain covers, twist grips, helmets, universal columns, bearings and some factory-matched components.



**XIECHANG ELECTRIC DRIVE TECHNOLOGY (SUZHOU) CO LTD**

**B2-D08**



XC & STRENGTH is mainly engaged in the research and development, production and sales of electric drive control products and power chips and focuses on overall solutions for motors and electronic control systems in the electric new energy field as a high-tech company.



**XUZHOU DELU ELECTRONICS CO LTD**

**B2-D14**



Electric vehicle handle, Turn into one (ghost king), Turn the seat, switch.

## Product Overview

## Hall B



**YUNTONG POWER CO LTD**

**B2-A13**



As a professional battery expert, based on 30 years experience at producing batteries, YUNTONG provides customers high quality cells, BMS, battery pack and charger. They also can do customized design to help customer save time to launch new product.



**ZHANGZHOU HUAWEI POWER SUPPLY TECHNOLOGY CO LTD**

**B2-A14**



Specialising in the integration of battery R&D, manufacturing, sales, and after-sales services, HUAWEI is a global leader in battery production and a provider of innovative energy solutions.